

DAILY ROUND-UP

Phone : +91 33 2359 4612 +91 33 2359 4614 +91 33 2358 1953

E-mail : research@shriraminsight.com



For Private Circulation Only

DATE: 06 January 2017

MARKET WRAP UP

- Trading for the first week of a new year ended on a sour note as key benchmark indices declined as profit booking kicked in on lower European stocks after a rally in previous few trading sessions. The S&P BSE Sensex, shed 119.01 points or 0.44% to settle at 26,759.23. The Nifty 50 index fell 30 points or 0.36% to settle at 8,243.80.
- The BSE Mid-Cap index fell 0.27%. The BSE Small-Cap index dropped 0.43%.

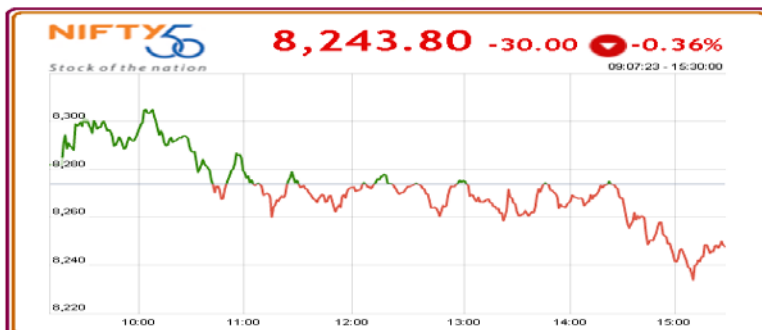
DERIVATIVES WATCH

- Nifty January series futures witnessed a fresh short position build up. Open Interest has been increased by 4122 contracts at the end of the day.
- Long position build up for the January series has been witnessed in ONGC, HD-FCBANK, HDFC.
- Short position build up for the January series has been witnessed in RELIANCE, BHARTIARTL, INFY.
- Unwinding of position for the January series has been witnessed in RELINFRA, LT, SBIN, ICICIBANK.

CORPORATE NEWS

- Tata Motors Ltd** UK-based subsidiary, Jaguar Land Rover, rose 8.7% on year to 7,487 units in December. The sales of Jaguar during the month were up 31.3% on year at 2,520 units, while sales of Land Rover were flat at 4,967 units, the company said.
- Reliance Communication** and Aircel's merger will be further delayed as the apex court of India has asked DOT to sell Aircel's 2G spectrum, if management does not co-operate.
- SBI** will take the lead among state-run lenders to launch branch less banking. The latest launch from the lender - SBI Digi Bank will have a financial superstore, a market place and end to end digitisation for all products and services.
- Kotak Mahindra Bank** has cut its base rate by 10 bps with effect from Jan 6.
- Tata Motors** and Castrol inked a three-year agreement under which the lubricants maker would supply commercial vehicle oils to the home-grown auto major in over 50 markets, including SAARC and ASEAN region, West Asia, Africa, Russia and Latin America.
- The promoters of Sona Group have acquired the shares held by **Mahindra & Mahindra** in a joint venture company for Rs1.20bn.
- Suzlon** Group has bagged 105 mega watt (MW) order from Axis Energy Group in Andhra Pradesh.
- Sun Pharma** gets USFDA approval for Atrovent; used to prevent bronchospasm, or narrowing airways in the lungs, in people with bronchitis.
- Natco Pharma** has received final nod from US drug regulator for generic version of Bendamustine Hydrochloride powder.
- Wockhardt** gets three year compliance certificate from German regulator for its Ankleshwar unit.
- Sanofi sues **Glenmark & Torrent Pharma** in the US court over their plans to launch a generic version of its multiple sclerosis drug, Aubagio.
- GE Power bags a contract worth Rs199 crore for steam turbine upgrade project at NTPC's Ramagundam super thermal power plant.
- Indian Bank** has fixed its MCLR for loans of different time intervals ranging from 'overnight' to 'five-years' duration. These rates are varying in the range of 8.40% to 8.90% effective from January 07, 2017.
- Syndicate Bank** has fixed its MCLR for loans of different time intervals ranging from 'overnight' to 'one-year' duration. These rates are varying in the range of 8.30% to 8.75% effective from January 10, 2017.

INDEX CHART



GLOBAL NEWS

- China's central bank raised the daily reference rate of the yuan by the most since mid 2005. The People's Bank of China fixed the yuan reference rate at 6.8668 against the U.S. dollar, versus 6.930.
- U.S. initial jobless claims dropped to 235,000 in the week ended December 31st, a decrease of 28,000 from the previous week's revised level of 263,000. Continuing claims rose by 16,000 jobs to 2.112 million in the week ended December 24th.
- U.S. ADP private sector employment climbed by 153,000 jobs in December after jumping by a revised 215,000 jobs in November.
- U.S. Markit service sector PMI came in at 53.9 in December. A preliminary survey had put the index at 53.4 for December, lower than the reading of 54.6 in November. The seasonally adjusted final composite PMI fell to 54.1 in December from 54.9 in November.

ECONOMIC NEWS

- Crude Oil traded at US\$ 54.08/bbl (IST 17:00).
- INR remained almost flat Rs. 67.97 from Rs. 67.96 against each US\$ resulting in daily change of 0.01%.
- India and Kazakhstan signed an agreement to amend the two-decade old bilateral tax treaty under which information exchanged between the two can be shared with other law enforcement agencies.
- Telecom regulator Trai will soon form a joint committee with telecom operators to review tariff rules, telephone numbering plan and work towards making its monitoring more transparent.
- The state government may sign MoUs worth Rs 30 lakh crore, surpassing the investment pledged during the previous edition in 2015.
- The 12 states that have signed up for Ujwal Discom Assurance Yojana (UDAY) have issued bonds totalling Rs1.83trn. The bonds issued have helped service 83% of the cumulative debt of the state-owned discoms.

EQUITIES DERIVATIVES COMMODITIES* DP SERVICES MUTUAL FUNDS RESEARCH

www.shriraminsight.com

SHRIRAM INSIGHT SHARE BROKERS LTD.

CK-5, Sector-II, Saltlake City, Kolkata - 700 091

*Through Insight Commodities & Futures Pvt. Ltd.

Tel : 2359 4612, 2359 4614, 2359 4877 Fax : (033) 2321-8429

E-mail : research@shriraminsight.com

DAILY ROUND-UP

Phone : +91 33 2359 4612 +91 33 2359 4614 +91 33 2358 1953

E-mail : research@shriraminsight.com



For Private Circulation Only

FORTHCOMING EVENT

BOARD MEETINGS AS ON 07/01/2017

- Bafna Pharmaceuticals Ltd Board Meeting
- Dena Bank Raising of Funds
- Manaksia Industries Limited Results
- Pratibha Industries Limited Preferential issue

BOARD MEETINGS AS ON 09/01/2017

- 8K Miles Software Services Limited Results
- Ahluwalia Contracts (India) Limited Issue of Securities
- Max Ventures and Industries Limited Raising of Funds

CORPORATE ACTIONS AS ON 09/01/2017

- Sterling Tools Limited Fv Splt Frm Rs 10 To Rs 2

Indian Markets

Indices	Close	Previous	Change (%)
NIFTY 50	8243.80	8273.80	-0.36%
S&P BSE SENSEX	26759.23	26878.24	-0.44%
NIFTY MID100 FREE	14854.20	14876.15	-0.15%
NIFTY SML100 FREE	6063.25	6087.50	-0.40%

Exchange Turnover

Market	Current	Previous
NSE Cash	18343.04	19027.21
NSE F&O	256255.52	513764.89

Previous FII Positions (IN CRORE)

ACTIVITIES	Cash	F&O
NET BUY	-	3509.08
NET SELL	86.88	-

Sectoral Indices

Indices	Close	Previous	Change (%)
BSE BANKEX	20900.86	20722.41	0.86%
BSE IT	9880.61	10138.06	-2.54%
BSE CG	14083.94	14120.62	-0.26%
BSE OIL & GAS	12569.79	12613.13	-0.34%
BSE FMCG	8193.12	8259.97	-0.81%
BSE AUTO	21009.68	21044.79	-0.17%
BSE HC	15070.83	15033.07	0.25%
BSE POWER	2039.27	2046.53	-0.35%
BSE METAL	10638.98	10642.54	-0.03%

Top Gainers

SCRIP NAME	Close	Previous	Change (%)
YESBANK	1246.75	1210.20	3.02%
KOTAKBANK	716.85	698.95	2.56%
EICHERMOT	22717.75	22324.35	1.76%
BANKBARODA	153.25	150.95	1.52%
INDUSINDBK	1144.05	1127.55	1.46%

Asia Pacific Markets

Indices	Close	Previous	Change (%)
Nikkei225	19454.33	19520.69	-0.34%
HangSeng	22503.01	22456.69	0.21%
Straits Times	2962.63	2954.14	0.29%
Shanghai	3154.32	3165.41	-0.35%
Kospi	2049.12	2041.95	0.35%
Jakarta	5347.02	5325.50	0.40%
Taiwan	9372.22	9358.14	0.15%
KLSE Composite	1675.49	1659.82	0.94%
All Ordinaries	5809.00	5805.10	0.07%

Top Losers

SCRIP NAME	Close	Previous	Change (%)
TECHM	469.75	488.10	-3.76%
HCLTECH	814.40	844.65	-3.58%
IDEA	72.90	74.80	-2.54%
INFY	972.25	996.15	-2.40%
TCS	2281.40	2334.40	-2.27%

DISCLAIMER

This document has been prepared by Shriram Insight Share Brokers Ltd. and is meant for sole use by the recipient and not for circulation. This document is not to be reported or copied or made available to others. The information contained herein is from sources believed reliable. It should not be considered to be taken as an offer to sell or a solicitation to buy any security or as an official confirmation of any transaction. We do not represent that it is accurate or complete and it should not be relied upon as such. This document is prepared for assistance only and is not intended to be and must not alone be taken as the basis for an investment decision. The investments discussed or recommended in this report may not be suitable for all investors. Shriram Insight Share Brokers Ltd stock Recommendation Service is a general recommendation service and is not to be construed as an individual investor specific Portfolio Management and Advisory Service.

The user assumes the entire risk of any use made of this information. Each recipient of this document should arrive at an independent evaluation of an investment in the securities of companies referred to in this document and should consult its own advisors to determine the merits and risks of such an investment.

Shriram Insight Share Brokers Ltd shall not be responsible for any loss or liability incurred to the user as a consequence of his or any other person on his behalf taking any investment decisions based on the information, recommendations, research reports, analysis, quotes, etc. provided on the web site.

Shriram Insight Share Brokers Ltd and its affiliated company (ies), their directors and employees may:

(a) from time to time, having a long or short position in, and buy or sell the securities of the company (ies) recommended.

(b) be engaged in any other transaction involving such securities and act as a market maker in the securities of the company (ies) or lender / borrower to such company (ies) or may have any other potential conflict of interests with respect to any recommendation and other related information and opinions.

Shriram Insight Share Brokers Ltd shall also not be liable for errors, omissions or typographical errors, disruption delay, interruption, failure, deletion or defect of/in the Service provided by it.

All Users of the Service in countries other than India understand that by using the Service, they may be violating the local laws in such countries. If the User chooses

EQUITIES DERIVATIVES COMMODITIES* DP SERVICES MUTUAL FUNDS RESEARCH

www.shriraminsight.com

SHRIRAM INSIGHT SHARE BROKERS LTD.

CK-5, Sector-II, Saltlake City, Kolkata - 700 091

*Through Insight Commodities & Futures Pvt. Ltd.

Tel : 2359 4612, 2359 4614, 2359 4877 Fax : (033) 2321-8429

E-mail : research@shriraminsight.com