

MARKET WRAP UP

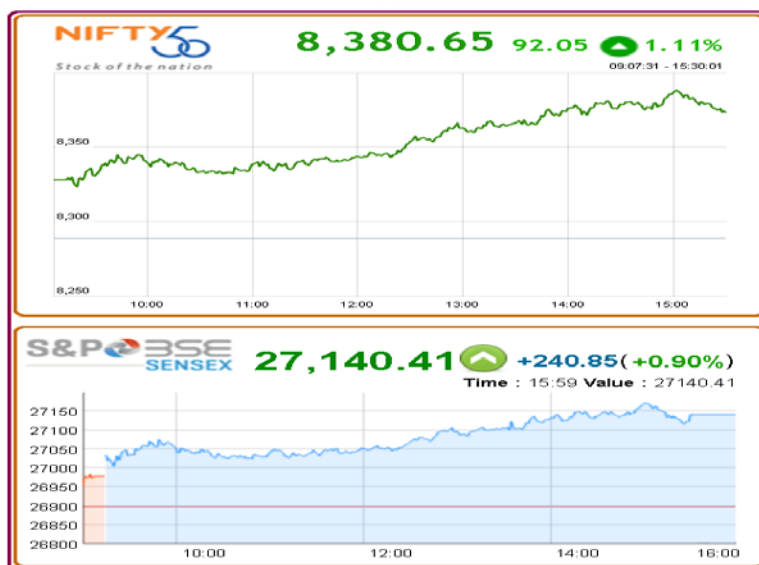
- Key benchmark indices registered strong gains on positive global cues. The S&P BSE Sensex, gained 240.85 points or 0.9% to settle at 27,140.41. The Nifty advanced 92.05 points or 1.11% to settle at 8,380.65. The Sensex settled above the psychological 27,000 level after crossing that level in early trade.
- The BSE Mid-Cap index rose 1.37%. The BSE Small-Cap index advanced 0.98%.

DERIVATIVES WATCH

- Nifty January series futures witnessed a fresh long position build up. Open Interest has been increased by 17930 contracts at the end of the day.
- Long position build up for the January series has been witnessed in BHARTIARTL, SBIN, ICICIBANK, HDFCBANK, HDFC.
- Short position build up for the January series has been witnessed in RELIANCE, INFY.
- Unwinding of position for the January series has been witnessed in HEROMOTOCO, JPASSOCIAT.

CORPORATE NEWS

- South Indian Bank** reported Q3 net profit rose by 9.59% to Rs111.38 crore Vs Rs101.63 crore (YoY). NII up 2.7% at Rs417.5 Cr Vs Rs406.7 crore (YoY).
- Bharti Airtel** is all set to launch its payment bank on January 12.
- Tata Motors** Group's global wholesales rose 4% to 95,081 units in December 2016 over December 2015.
- Suzlon Energy** has announced that it was awarded 226.80 megawatt (MW) contract from a leading independent power producer (IPP).
- Lupin** has received final approval for its Desoximetasone Cream USP, 0.05% and Desoximetasone cream USP, 0.25% from the USFDA to market a generic equivalent of Taro Pharmaceuticals North America, Inc's Topicort LP emollient cream, 0.05% and Taro Pharmaceuticals, Inc's (collectively Taro) Topicort cream, 0.25%.
- Ipca Laboratories** has completed remediation of two formulation plants at Pithampur.
- TPG may buy stake in **Fortis Healthcare** and the deal is likely to announce this or next week.
- UCO Bank** slashed its benchmark lending rate by 0.7% to 8.60% for 1-year tenor.
- Welspun Group announced an investment of Rs4000 crore for three large textile projects in Gujarat.
- Indian Oil Corp.** is looking to buy more oil assets to ensure that its 10th refining capacity, which is yet to be set up, is supplied with crude either from its own field or from assets where it has a stake.
- Jubilant Life Sciences** has announced on January 11, 2017, that it has issued a Commercial Paper (CP) of Rs 50 crore. The tenure of instrument is for 70 days. The maturity date of the same will be March 22, 2017. The interest offered is 6.68% per annum.
- Cairn India** said Promoter **Vedanta Ltd.** to acquire additional 2.55% stake in the company from its wholly-owned subsidiary. Promoter holding would remain unchanged at 59.85%.
- MEP Infrastructure Developers** has announced that its subsidiary has entered into a concession agreement with National Highway Authority of India (NHAI).

INDEX CHART**GLOBAL NEWS**

- U.S. wholesale inventories surged up by 1.0% in November after edging down by a revised 0.1% in October.
- U.K. trade in goods showed a deficit of GBP 12.2 billion in November versus a shortfall of GBP 9.9 billion in October.
- U.K. industrial production climbed 2.1% in November from October, when production eased 1.1%. Similarly, manufacturing output climbed 1.3% in contrast to prior month's 1% decrease. Year-on-year, industrial output rebounded 2% after falling 0.9% in October. Likewise, manufacturing output expanded 1.2%, reversing October's 0.5% decrease.
- France's industrial production logged a monthly expansion of 2.2% in November, in contrast to October's 0.1% fall.

ECONOMIC NEWS

- Crude Oil traded at US\$ 51.22/bbl (IST 17:00).
- INR weakened to Rs. 68.33 from Rs. 68.18 against each US\$ resulting in daily change of 0.21%.
- Foreign India is unlikely to amend its tax treaty with the Netherlands as it did with Mauritius, Singapore and Cyprus and this could shape the investment strategy of foreign portfolio investors (FPI) and private equity (PE) funds investing in India.
- On-road emission tests for vehicles plying on Indian roads will be mandatory once the Bharat Stage VI norm kicks in from 2020, for which testing agency ARAI is developing a unified test cycle.
- Income Tax Department has been asked to scrutinise details and send notices to depositors of Rs3-4trn on which tax could have been evaded.
- The government plans to launch a second tranche of the CPSE ETF to raise as much as Rs 60 billion as a part of the 2016-17 disinvestment programme. The first tranche of the CPSE ETF was launched during 2013-14 to raise Rs 30 billion.
- India's telecom subscriber base crossed the 1.1 billion mark in October, registering highest customer addition of around 29mn in a month, driven by Reliance Jio.

For Private Circulation Only

FORTHCOMING EVENT

BOARD MEETINGS AS ON 12/01/2017

- Tata Consultancy Services Limited Results/Dividend
- Bajaj Corp Limited Results/Dividend
- Cyient Limited Results
- Reliance Industrial Infrastructure Limited Results
- Zee Learn Limited Results
- NHPC Limited Dividend

CORPORATE ACTIONS AS ON 12/01/2017

- Balrampur Chini Mills Limited Buy Back
- Dhanuka Agritech Limited Buy Back
- Oil India Limited Bonus 1:3
- Vardhman Acrylics Limited Buyback

Indian Markets

| Indices | Close | Previous | Change (%) |
|-------------------|----------|----------|------------|
| NIFTY 50 | 8380.65 | 8288.60 | 1.11% |
| S&P BSE SENSEX | 27140.41 | 26899.56 | 0.90% |
| NIFTY MID100 FREE | 15159.75 | 14984.30 | 1.17% |
| NIFTY SML100 FREE | 6248.65 | 6185.35 | 1.02% |

Exchange Turnover

| Market | Current | Previous |
|----------|-----------|-----------|
| NSE Cash | 21562.17 | 17867.45 |
| NSE F&O | 532573.25 | 229963.05 |

Previous FII Positions (IN CRORE)

| ACTIVITIES | Cash | F&O |
|------------|-------|-------|
| NET BUY | - | 68.43 |
| NET SELL | 21.20 | - |

Sectoral Indices

| Indices | Close | Previous | Change (%) |
|---------------|----------|----------|------------|
| BSE BANKEX | 21542.16 | 21036.44 | 2.40% |
| BSE IT | 9953.35 | 9955.13 | -0.02% |
| BSE CG | 14423.40 | 14225.52 | 1.39% |
| BSE OIL & GAS | 12604.13 | 12544.99 | 0.47% |
| BSE FMCG | 8320.94 | 8304.66 | 0.20% |
| BSE AUTO | 21465.64 | 21263.44 | 0.95% |
| BSE HC | 15123.23 | 15009.54 | 0.76% |
| BSE POWER | 2066.02 | 2045.61 | 1.00% |
| BSE METAL | 11228.54 | 10753.16 | 4.42% |

Top Gainers

| SCRIP NAME | Close | Previous | Change (%) |
|------------|---------|----------|------------|
| HINDALCO | 174.95 | 164.40 | 6.42% |
| INDUAINDBK | 1233.80 | 1160.70 | 6.30% |
| COALINDIA | 316.85 | 300.60 | 5.41% |
| BANKBARODA | 159.60 | 152.95 | 4.35% |
| YESBANK | 1317.85 | 1264.60 | 4.21% |

Asia Pacific Markets

| Indices | Close | Previous | Change (%) |
|----------------|----------|----------|------------|
| Nikkei225 | 19364.67 | 19301.44 | 0.33% |
| HangSeng | 22935.35 | 22744.85 | 0.84% |
| Straits Times | 3000.94 | 3006.02 | -0.17% |
| Shanghai | 3136.75 | 3161.67 | -0.79% |
| Kospi | 2075.17 | 2045.12 | 1.47% |
| Jakarta | 5301.24 | 5309.92 | -0.16% |
| Taiwan | 9345.74 | 9349.64 | -0.04% |
| KLSE Composite | 1675.21 | 1672.05 | 0.19% |
| All Ordinaries | 5823.70 | 5813.00 | 0.18% |

Top Losers

| SCRIP NAME | Close | Previous | Change (%) |
|------------|---------|----------|------------|
| BAJAJ-AUTO | 2718.55 | 2740.75 | -0.81% |
| ITC | 247.55 | 248.95 | -0.56% |
| HCLTECH | 833.25 | 837.85 | -0.55% |
| ONGC | 197.65 | 198.45 | -0.40% |
| RELIANCE | 1086.05 | 1089.85 | -0.35% |

DISCLAIMER

This document has been prepared by Shriram Insight Share Brokers Ltd. and is meant for sole use by the recipient and not for circulation. This document is not to be reported or copied or made available to others. The information contained herein is from sources believed reliable. It should not be considered to be taken as an offer to sell or a solicitation to buy any security or as an official confirmation of any transaction. We do not represent that it is accurate or complete and it should not be relied upon as such. This document is prepared for assistance only and is not intended to be and must not alone be taken as the basis for an investment decision. The investments discussed or recommended in this report may not be suitable for all investors. Shriram Insight Share Brokers Ltd stock Recommendation Service is a general recommendation service and is not to be construed as an individual investor specific Portfolio Management and Advisory Service.

The user assumes the entire risk of any use made of this information. Each recipient of this document should arrive at an independent evaluation of an investment in the securities of companies referred to in this document and should consult its own advisors to determine the merits and risks of such an investment.

Shriram Insight Share Brokers Ltd shall not be responsible for any loss or liability incurred to the user as a consequence of his or any other person on his behalf taking any investment decisions based on the information, recommendations, research reports, analysis, quotes, etc. provided on the web site.

Shriram Insight Share Brokers Ltd and its affiliated company (ies), their directors and employees may:

(a) from time to time, having a long or short position in, and buy or sell the securities of the company (ies) recommended.

(b) be engaged in any other transaction involving such securities and act as a market maker in the securities of the company (ies) or lender / borrower to such company (ies) or may have any other potential conflict of interests with respect to any recommendation and other related information and opinions.

Shriram Insight Share Brokers Ltd shall also not be liable for errors, omissions or typographical errors, disruption delay, interruption, failure, deletion or defect of/in the Service provided by it.

All Users of the Service in countries other than India understand that by using the Service, they may be violating the local laws in such countries. If the User chooses

EQUITIES DERIVATIVES COMMODITIES* DP SERVICES MUTUAL FUNDS RESEARCH