

## MARKET WRAP UP

- Key benchmark indices ended a lacklustre session of trade with small losses. The S&P BSE Sensex, fell 26.38 points or 0.08% to settle at 29,894.80. The Nifty 50 index fell 1.85 points or 0.02% to settle at 9,311.95.
- The BSE Mid-Cap index fell 0.3%. The BSE Small-Cap index rose 0.07%.

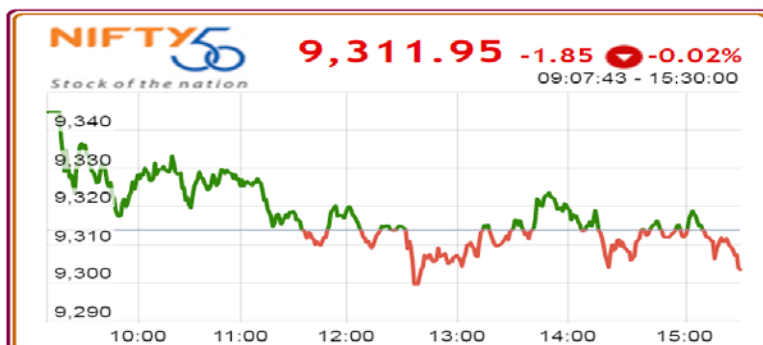
## DERIVATIVES WATCH

- Nifty May series futures witnessed a fresh short position build up. Open Interest has been increased by 9806 contracts at the end of the day.
- Long position build up for the May series has been witnessed in INFY, GODREJCP.
- Short position build up for the May series has been witnessed in RELIANCE, BHARTIARTL, ICICIBANK, HDFCBANK.
- Unwinding of position for the May series has been witnessed in RELCAPITAL, RELINFRA, SBIN.

## CORPORATE NEWS

- IDFC Ltd** reported a 3.33% rise in Q4 consolidated net profit at Rs 134.80 cr vs Rs 130.45 cr (YoY). Total income rose to Rs 2,577.88 cr, up 22.66%, from Rs 2,101.61 cr.
- Marcio** consolidated profit after tax rose 26% yoy to Rs 169 crore in the fourth quarter. Consolidated revenues grew by 2.3% (YoY) to Rs 1332.2crore. The domestic FMCG revenues grew by 6% during the quarter with volume growth recovering to healthy 10% from sales volume decline of 4% in Q3FY2017.
- RBL Bank** reported 54% jump in Q4 net profit at Rs130.13 crore for the January-March quarter. Total income of the bank rose to Rs 1,222.87 crore in the last quarter of FY2016-17 from Rs 904.66 crore in the same quarter of previous fiscal. Net NPA came at Rs 189.9 crore Vs Rs 139.6 crore (QoQ)
- Q4 Net profit of **Cholamandalam Investment & Finance Company** rose 14.11% to Rs 221.17 cr vs Rs 193.82 cr (YoY). Sales rose 6.82% to Rs1215.67 cr vs Rs 1138.10 cr.
- Coromandel International's** Q4 revenue for the quarter came in 22.4 % lower at Rs. 2895 crore. EBITDA for the quarter came in 27.9 % lower at Rs. 254 crore. Net profit for the quarter came in 12.1 % higher at Rs128.7 crore.
- KPIT** reported Q4 profit after tax of Rs 53.73 cr, down 26.98% from Rs73.58 cr in the previous quarter and down 42.10% from Rs92.73 cr in the corresponding quarter last year. USD revenue for the quarter grew 4.4% sequentially to \$ 128.3 mn and 3.3% in rupee terms at Rs 858.46 cr.
- Ajanta Pharma** posted Q4 Consolidated net profit at Rs114 crore Vs Rs109 crore (YoY). Total Income up 10.7% at Rs476.8 cr Vs Rs430.6 cr.
- Alembic Pharmaceuticals** posted Q4 PAT at Rs 93 crore Vs Rs 91 crore (YoY). Revenue at Rs741 crore Vs Rs627 crore (YoY). EBITDA Down 5.6% at Rs135.5 crore. EBITDA margin at 18.4% Vs 23%.
- Dewan Housing Finance Corporation Ltd** reported Q4 net profit at Rs 2217.7 crore. NII up 31% at Rs627.9 crore Vs Rs479.3 crore (YoY).
- Hero Motocorp** April 2017 sales declined 3.5% YoY to 591,306 units pointing at a weak demand scenario. Hero Motocorp hikes price in range of Rs500 to Rs2200 across different models.
- Tata Motors** (JLR US) retail sales grow robust 35% yoy. Jaguar sales almost trebled to 3,230 units during the month led by healthy demand for F-Pace SUV which sold 1,377 units. Land Rover sales were flat at 5,211 units.
- Bajaj Auto** has reported a flat growth for the month at 329,800. The exports registered a steep 59% YoY growth for the month pointing at improvement in the on ground demand.

## INDEX CHART



## GLOBAL NEWS

- U.S. seasonally-adjusted annual rate (SAAR) of sales fell to 16.88 million units, from 17.4 million last April when car sales were headed for another record year.
- U.K. Markit/CIPS manufacturing PMI climbed to 57.3 in April from March's 4-month low of 54.2.
- U.K. CIPS/Markit construction PMI climbed to 53.1 in April from 52.2 in March.
- Eurozone gross domestic product expanded 0.5% sequentially in the first quarter. On a yearly basis, GDP growth slowed marginally to 1.7% from 1.8% in the preceding quarter.
- Eurozone factory PMI rose to 56.7 in April from 56.2 in March.
- Germany's unemployment declined by 15,000 in April, compared to the expected fall of 11,000. The jobless rate held steady at 5.8%.
- France's final factory PMI climbed to 55.1 in April from 53.3 in the prior month.
- India seasonally adjusted Nikkei manufacturing PMI came in at 52.5 in April, the same reading as in March.

## ECONOMIC NEWS

- Crude Oil traded at US\$ 47.90/bbl (IST 17:00).
- INR strengthened to Rs. 64.16 from Rs. 64.22 against each US\$ resulting in daily change of 0.10%.
- OMCs have increased diesel price by Rs0.44/litre (excluding state levies) while Petrol price largely remained flat with increase of only 1 paisa per litre (excluding state levies).
- The government is preparing to create a bad bank to tackle non-performing assets mess that has plagued the public-sector banks. PMO said to have agreed to the idea of the creation of the bad bank.
- India's total imports of pulses increased by nearly 20% to 5.67 million tonnes. The total production has been nearly 22.14 million tonnes of crop.

For Private Circulation Only

## FORTHCOMING EVENT

### BOARD MEETINGS AS ON 04/05/2017

• Emami Limited	Results/Dividend
• Godrej Properties Limited	Results/Others
• Exide Industries Limited	Results/Dividend
• IIFL Holdings Limited	Results/Others
• L&T Finance Holdings Limited	Results/Dividend
• Larsen & Toubro Infotech Limited	Results/Dividend
• Oberoi Realty Limited	Results/Dividend
• Tata Communications Limited	Results/Dividend
• Wockhardt Limited	Results/Dividend
• MRF Limited	Results/Dividend
• HDFC Limited	Results/Dividend
• Wockhardt Limited	Results/Dividend

• Astec LifeSciences Limited	Results/Dividend
• Bank of Maharashtra	Results/Dividend
• BASF India Limited	Results/Dividend
• Cera Sanitaryware Limited	Results/Others
• Greaves Cotton Limited	Results/Dividend
• HCCompany Limited	Results
• Next Mediaworks Limited	Results

### CORPORATE ACTIONS AS ON 04/05/2017

• Beardsell Limited	Bonus 1:5/Face Value Split (Sub-Division) - From Rs 10/- Per Share To Rs 2/- Per Share
• Indiabulls Housing Finance Limited	Interim Dividend Rs 9/- Per Share
• Vesuvius India Limited	Dividend - Rs 6.50 Per Share

## Indian Markets

Indices	Close	Previous	Change (%)
NIFTY 50	9311.95	9313.80	-0.02%
S&P BSE SENSEX	29894.80	29921.18	-0.09%
NIFTY MID100 FREE	18126.20	18187.80	-0.34%
NIFTY SML100 FREE	7532.75	7452.70	1.07%

## Exchange Turnover

Market	Current	Previous
NSE Cash	25272.97	25973.13
NSE F&O	367132.58	364622.32

## Previous FII Positions ( IN CRORE )

ACTIVITIES	Cash	F&O
NET BUY	-	48.07
NET SELL	611.82	-

## Sectoral Indices

Indices	Close	Previous	Change (%)
BSE BANKEX	25246.28	25341.38	-0.38%
BSE IT	9805.83	9670.37	1.40%
BSE CG	17679.40	17766.30	-0.49%
BSE OIL & GAS	14508.40	14606.16	-0.67%
BSE FMCG	9384.73	9408.90	-0.26%
BSE AUTO	22896.38	22903.84	-0.03%
BSE HC	14757.24	14902.64	-0.98%
BSE POWER	2324.72	2318.06	0.29%
BSE METAL	11203.45	11238.86	-0.32%

## Top Gainers

SCRIP NAME	Close	Previous	Change (%)
INFRATEL	363.00	354.20	2.48%
POWERGRID	211.05	206.00	2.45%
ULTRACEMCO	4301.40	4206.00	2.27%
TCS	2337.30	2289.90	2.07%
COALINDIA	279.55	274.55	1.82%

## Asia Pacific Markets

Indices	Close	Previous	Change (%)
Nikkei225	CLOSED	19445.70	-
HangSeng	CLOSED	24696.13	-
Straits Times	3237.81	3211.11	0.83%
Shanghai	3135.35	3143.71	-0.27%
Kospi	CLOSED	2219.67	-
Jakarta	5647.37	5675.81	-0.50%
Taiwan	9955.33	9941.27	0.14%
KLSE Composite	1772.51	1778.47	-0.34%
All Ordinaries	5919.90	5971.40	-0.86%

## Top Losers

SCRIP NAME	Close	Previous	Change (%)
LUPIN	1264.90	1303.80	-2.98%
AUROPHARMA	584.65	596.80	-2.04%
TATAPOWER	82.20	83.70	-1.79%
HINDALCO	197.05	200.25	-1.60%
ZEEL	527.20	534.20	-1.31%

## DISCLAIMER

This document has been prepared by Shriram Insight Share Brokers Ltd. and is meant for sole use by the recipient and not for circulation. This document is not to be reported or copied or made available to others. The information contained herein is from sources believed reliable. It should not be considered to be taken as an offer to sell or a solicitation to buy any security or as an official confirmation of any transaction. We do not represent that it is accurate or complete and it should not be relied upon as such. This document is prepared for assistance only and is not intended to be and must not alone be taken as the basis for an investment decision. The investments discussed or recommended in this report may not be suitable for all investors. Shriram Insight Share Brokers Ltd stock Recommendation Service is a general recommendation service and is not to be construed as an individual investor specific Portfolio Management and Advisory Service.

The user assumes the entire risk of any use made of this information. Each recipient of this document should arrive at an independent evaluation of an investment in the securities of companies referred to in this document and should consult its own advisors to determine the merits and risks of such an investment.

Shriram Insight Share Brokers Ltd shall not be responsible for any loss or liability incurred to the user as a consequence of his or any other person on his behalf taking any investment decisions based on the information, recommendations, research reports, analysis, quotes, etc. provided on the web site

Shriram Insight Share Brokers Ltd and its affiliated company (ies), their directors and employees may;

(a) from time to time, having a long or short position in, and buy or sell the securities of the company (ies) recommended.

(b) be engaged in any other transaction involving such securities and act as a market maker in the securities of the company (ies) or lender / borrower to such company (ies) or may have any other potential conflict of interests with respect to any recommendation and other related information and opinions.

Shriram Insight Share Brokers Ltd shall also not be liable for errors, omissions or typographical errors, disruption delay, interruption, failure, deletion or defect of/in the Service provided by it.

All Users of the Service in countries other than India understand that by using the Service, they may be violating the local laws in such countries. If the User chooses

EQUITIES DERIVATIVES COMMODITIES\* DP SERVICES MUTUAL FUNDS RESEARCH