

MARKET WRAP UP

- Key benchmark indices drifted lower on first trading day of the week. The S&P BSE Sensex, fell 130.25 points or 0.44% at 29,518.74. The Nifty 50 index fell 33.20 points or 0.36% at 9,126.85. Weakness in world stocks dampened sentiment on the domestic bourses. Profit booking kicked in on the domestic bourses after the recent upmove saw Nifty hitting record high on Friday, 17 March 2017.
- The BSE Mid-Cap index rose 0.17%. The BSE Small-Cap index rose 0.30%. On the BSE, 1,445 shares declined and 1,351 shares rose. A total of 227 shares were unchanged.

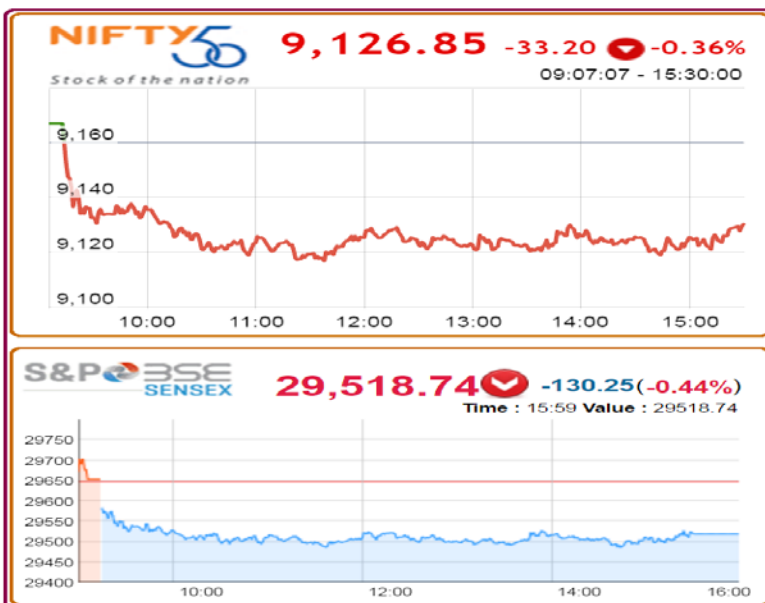
DERIVATIVES WATCH

- Nifty March series futures witnessed a fresh short position build up. Open Interest has been increased by 15475 contracts at the end of the day.
- Long position build up for the March series has been witnessed in BHARTIARTL, SBIN, HDFCBANK, HDFC.
- Short position build up for the March series has been witnessed in RELIANCE, LT, ICICIBANK, INFY.
- Unwinding of position for the March series has been witnessed in RELCAPITAL, JPASSOCIAT.

CORPORATE NEWS

- Idea Cellular** has approved the scheme of amalgamation of Vodafone India (VIL) and its wholly owned subsidiary Vodafone Mobile Services (VMSL) with the company subject to receipt of necessary approvals of shareholders, creditors, Sebi, stock exchanges, the Competition Commission of India, the Department of Telecommunications (DoT), the Foreign Investment Promotion Board, the Reserve Bank of India and other governmental authorities and third parties (as may be required).
- Reliance Communications** has received an approval of the Competition Commission of India (CCI) for the proposed merger with Aircel.
- Larsen & Toubro** announced that its wholly-owned subsidiary, L&T Hydrocarbon Engineering has bagged an offshore contract from ONGC worth Rs 1656 cr.
- ONGC** has signed a pact to buy out the debt-ridden, Gujarat State Petroleum Corporation's (GSPC) entire 80% stake in KG-basin natural gas block for \$1.2 billion.
- Bharti Airtel** is in the final stages of talks with Tikona Digital to buy the latter's 4G spectrum, as Airtel seeks to increase its capacity to offer data services to customers.
- Government to infuse Rs 8,586 crore capital in 10 PSU Banks namely **Allahabad Bank, Andhra Bank, Bank of India, Bank of Maharashtra, Central bank of India, Dena Bank, IDBI Bank, Indian overseas Bank, UCO Bank and United Bank of India.**
- Infosys** has decided not to apply for H-1B visas for junior employees, as the IT Company comes to terms with the prospect of tougher regulations governing the work visas.
- Tech Mahindra** has entered into a global partnership agreement with Huawei Enterprise to market its product & services in 44 countries including India.
- Tata Motors** will launch "Tigor" car on 29th March 2017 and the bookings for the car have commenced. Potential customers can book the car at a token amount of Rs 10,000 and once introduced, the Tigor will replace Tata's entry level sedan, the Indigo CS.
- Reliance Industries Limited** is planning a 15 days maintenance shutdown at its 150ktpa monoethylene glycol (MEG) unit at Hazira by end-March-2017.
- Ashok Leyland** to set up manufacturing units in Jharkhand and Telangana.
- Glenmark** gets tentative approval from the USFDA for Fingolimod Capsules (generic version of Gilenya Capsules of Novartis) which has sales of approximately \$2.03 billion.

INDEX CHART



GLOBAL NEWS

- U.S. industrial production was unchanged in February after edging down by a revised 0.1% in January. Manufacturing output also rose by 0.5% for the second straight month, reflecting the sixth consecutive monthly increase.
- U.S. consumer sentiment index rose to 97.6 in March after dropping to 96.3 in February.
- U.S. CB leading economic index rose by 0.6% in February, matching the increases seen in the two previous months.
- U.K. Rightmove house prices climbed 1.3% month-over-month in March, following a 2.0% rise in February. On an annual basis, house prices grew at a steady pace of 2.3% in March.
- Germany's producer prices advanced 3.1% in February from prior year. Month-on-month, producer prices climbed 0.2%, but slower than January's 0.7% increase.

ECONOMIC NEWS

- Crude Oil traded at US\$ 48.15/bbl (IST 17:00).
- INR strengthened to Rs. 65.36 from Rs. 65.47 against each US\$ resulting in daily change of 0.17%.
- Domestic air traffic rose 15.7% in February, ending thirteen months of 20% plus growth. Domestic airlines flew 8.6 million people last month compared to 7.4 million in February 2016, a leap year.
- The Union Cabinet, on Monday, has approved the four GST Bills, namely Central GST (CGST), Integrated GST (IGST), Compensation Bill and Union Territory GST (UT GST).
- Dedicated Freight Corridor Corporation of India (DFCCIL), a Special Purpose Vehicle set up under the administrative control of Ministry of Railways, has signed an agreement with representatives from Monash University's Institute of Railway Technology (IRT).

For Private Circulation Only

FORTHCOMING EVENT

BOARD MEETINGS AS ON 21/03/2017

- | | |
|------------------------------|-------------------------|
| • ABG Shipyard Limited | Results |
| • Empee Distilleries Limited | Conversion |
| • IDBI Bank Limited | Preferential issue |
| • Net 4 India Limited | Board Meeting Adjourned |
| • Sharda Cropchem Limited | Dividend |

CORPORATE ACTIONS AS ON 21/03/2017

- | | |
|---------------------------|------------------------------------|
| • CRISIL Limited | Dividend Rs 9/- Per Share |
| • Shilpa Medicare Limited | Interim Dividend Re 0.60 Per Share |

Indian Markets

Indices	Close	Previous	Change (%)
NIFTY 50	9126.85	9160.05	-0.36%
S&P BSE SENSEX	29518.74	29648.99	-0.44%
NIFTY MID100 FREE	16962.25	16901.70	0.36%
NIFTY SML100 FREE	6832.00	6804.65	0.40%

Exchange Turnover

Market	Current	Previous
NSE Cash	22650.34	31890.23
NSE F&O	260097.56	302287.47

Previous FII Positions (IN CRORE)

ACTIVITIES	Cash	F&O
NET BUY	1532.39	280.38
NET SELL	-	-

Sectoral Indices

Indices	Close	Previous	Change (%)
BSE BANKEX	24050.29	24151.13	-0.42%
BSE IT	10441.22	10585.67	-1.36%
BSE CG	16030.44	16088.96	-0.36%
BSE OIL & GAS	13351.96	13421.34	-0.52%
BSE FMCG	9225.87	9206.63	0.21%
BSE AUTO	22276.01	22258.02	0.08%
BSE HC	15551.01	15482.69	0.44%
BSE POWER	2233.27	2228.71	0.20%
BSE METAL	11869.74	11875.87	-0.05%

Top Gainers

SCRIP NAME	Close	Previous	Change (%)
AUOPHARMA	704.90	687.55	2.52%
GRASIM	1062.45	1041.40	2.02%
EICHERMOT	25099.30	24691.40	1.65%
BHEL	170.90	168.65	1.33%
TATAPOWER	87.15	86.35	0.93%

Asia Pacific Markets

Indices	Close	Previous	Change (%)
Nikkei225	CLOSED	19521.59	-
HangSeng	24501.99	24309.93	0.79%
Straits Times	3165.70	3169.38	-0.12%
Shanghai	3250.81	3237.45	0.41%
Kospi	2157.01	2164.58	-0.35%
Jakarta	5533.99	5540.43	-0.12%
Taiwan	9912.97	9908.69	0.04%
KLSE Composite	1749.41	1745.20	0.24%
All Ordinaries	5820.50	5840.80	-0.35%

Top Losers

SCRIP NAME	Close	Previous	Change (%)
IDEA	97.70	108.10	-9.62%
AXISBANK	502.85	517.15	-2.77%
ICICIBANK	275.05	280.60	-1.98%
TCS	2480.00	2525.75	-1.81%
INFY	1021.50	1040.30	-1.81%

DISCLAIMER

This document has been prepared by Shriram Insight Share Brokers Ltd. and is meant for sole use by the recipient and not for circulation. This document is not to be reported or copied or made available to others. The information contained herein is from sources believed reliable. It should not be considered to be taken as an offer to sell or a solicitation to buy any security or as an official confirmation of any transaction. We do not represent that it is accurate or complete and it should not be relied upon as such. This document is prepared for assistance only and is not intended to be and must not alone be taken as the basis for an investment decision. The investments discussed or recommended in this report may not be suitable for all investors. Shriram Insight Share Brokers Ltd stock Recommendation Service is a general recommendation service and is not to be construed as an individual investor specific Portfolio Management and Advisory Service.

The user assumes the entire risk of any use made of this information. Each recipient of this document should arrive at an independent evaluation of an investment in the securities of companies referred to in this document and should consult its own advisors to determine the merits and risks of such an investment.

Shriram Insight Share Brokers Ltd shall not be responsible for any loss or liability incurred to the user as a consequence of his or any other person on his behalf taking any investment decisions based on the information, recommendations, research reports, analysis, quotes, etc. provided on the web site

Shriram Insight Share Brokers Ltd and its affiliated company (ies), their directors and employees may;

(a) from time to time, having a long or short position in, and buy or sell the securities of the company (ies) recommended.

(b) be engaged in any other transaction involving such securities and act as a market maker in the securities of the company (ies) or lender / borrower to such company (ies) or may have any other potential conflict of interests with respect to any recommendation and other related information and opinions.

Shriram Insight Share Brokers Ltd shall also not be liable for errors, omissions or typographical errors, disruption delay, interruption, failure, deletion or defect of/in the Service provided by it.

All Users of the Service in countries other than India understand that by using the Service, they may be violating the local laws in such countries. If the User chooses

EQUITIES DERIVATIVES COMMODITIES* DP SERVICES MUTUAL FUNDS RESEARCH