

## MARKET WRAP UP

- Key benchmark indices spurred following a relief rally in global equities after centrist candidate Emmanuel Macron won the first round of the French presidential election on Sunday, 23 April 2017. The S&P BSE Sensex, rose 287.40 points or 0.97% to settle at 29,943.24. The Nifty 50 index gained 88.65 points or 0.96% to settle at 9,306.60. The Nifty hit a record high. Key indices gained for the second day in a row today, 25 April 2017.
- The BSE Mid-Cap index rose 1.06%. The BSE Small-Cap index gained 0.58%. On BSE, 1,467 shares rose and 1,443 shares fell. A total of 170 shares were unchanged.

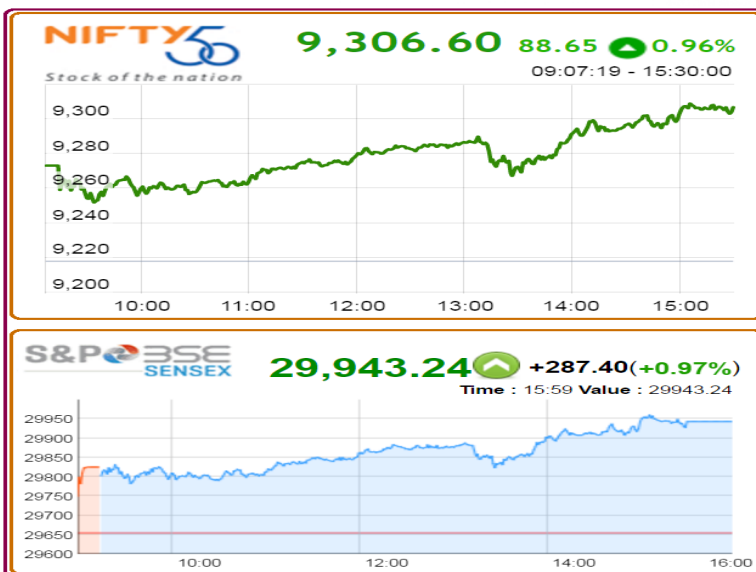
## DERIVATIVES WATCH

- Nifty May series futures witnessed a fresh long position build up. Open Interest has been increased by 62009 contracts at the end of the day.
- Long position build up for the May series has been witnessed in RELIANCE, BHARTIARTL, ICICIBANK, HDFC, INFY.
- Short position build up for the May series has been witnessed in HCLTECH, TCS.

## CORPORATE NEWS

- Reliance Industries Limited** reported a 11.54% YoY jump in Q4 consolidated net profit to Rs 8,053 cr vs Rs 7,220 cr. Total income jump 43.78% to Rs. 94825 cr vs Rs. 65950 Cr. The company has recommended a dividend of Rs 11 per share.
- Indian Bank** posted Q4 net profit at Rs 319.7 crore Vs Rs 93.6 crore (YoY). Net NPA at 4.39% Vs 4.76%. Gross NPA at 7.47% Vs 7.69% (QoQ).
- Reliance Industries Limited** and BP Plc are likely to buy Niko Resources 10% stake in RIL's gas discovery in block NEC-25
- Bharat Heavy Electricals Ltd** has received its largest ever export order, valued at Rs10,000 crore (USD1.5 billion), for setting up 1,320 MW (2x660 MW) Maitree Super Thermal Power Project in Bangladesh.
- Oil and Natural Gas Corporation** aims to increase its gas production by 30% to 30bcm (from 23bcm currently) in next 3-4 years at a total investment of \$11 billion.
- Glenmark Pharma** gets USFDA clearance for its Investigational New Drug (IND) application to initiate human study for GBR 310 (a proposed biosimilar) indicated for the treatment of allergic asthma and chronic idiopathic urticaria (skin disease).
- Strides Shasun**: USFDA inspection at the API Facility of the Company at Cuddalore completed with Zero 483 observations.
- Jubilant Life Sciences** received Abbreviated New Drug Application final approval for Olmesartan Medoxomil Tablets, 5 mg, 20 mg and 40 mg.
- Alembic Pharmaceuticals** has received abbreviated new drug application (ANDA) final approval for olmesartan medoxomil tablets, 5 mg, 20 mg, and 40 mg and olmesartan medoxomil with hydrochlorothiazide tablets 20/12.5mg, 40/12.5mg and 40/25mg.
- Heritage Foods Limited** announced that it is in the process of entering into a Joint Venture (JV) with an European dairy firm for manufacturing and marketing yogurt in India.
- Arvind** launches its ready-to-wear brand (athletic leisure wear) in Gujarat, Karnataka and plans to scale up in other states in the coming months.
- Ashok Leyland** sees multifold rise in defence business on expanded offerings; to commence export of Neptune engines to US market.
- Tata Communications** has been chosen by a US-based digital media and broadcasting company to build a high-performance cloud-based platform for global media asset management, content contribution and distribution.

## INDEX CHART



## GLOBAL NEWS

- China's Conference Board leading economic indicator climbed 0.9% month-over-month in March, following a 1.3% rise in February.
- U.K. consumer confidence index dropped to -7.0 in the first quarter from -6.0 in the fourth quarter of 2016.
- U.K. balance of domestic orders came in at +20% in three months to April, the highest since July 2014. In April, the total orders balance fell to +4% from +8% in March.
- Eurozone's government deficit to GDP ratio declined to 1.5% from 2.1% in 2015. The corresponding ratio for EU28 dropped to 1.7% from 2.4%.
- French manufacturing confidence index rose 3 points to 108 in April, the highest since June 2011.

## ECONOMIC NEWS

- Crude Oil traded at US\$ 49.31/bbl (IST 17:00).
- INR strengthened to Rs. 64.27 from Rs. 64.44 against each US\$ resulting in daily change of 0.27%.
- The government has approved six FDI proposals and recommended one proposal for the Cabinet Committee on Economic Affairs (CCEA).
- Passenger vehicles: Small cars taxation under GST would be marginally higher (28% tax) as against current rate of 27-27.5%. Luxury cars (above 2000 cc) would be taxed at marginally lower rate of 43% as against current levy of 44.5%. However, mid size cars upto 1500 cc are taxed at 38.5% and would continued to be taxed at same level under the GST.
- The natural rubber production in the country has surpassed the target of 6.54 lakh tonnes set by the Rubber Board for 2016-17. The production has jumped by 23 % from a year earlier to reach 6.90 lakh tonnes. The output had plummeted to the lowest in two decades at 5.62 lakh tonne in 2015-16. The production increased 67% in the month of March 2017 to 55,000 tonnes from the same period last year .

For Private Circulation Only

## FORTHCOMING EVENT

### BOARD MEETINGS AS ON 26/04/2017

• Axis Bank Limited	Results/Dividend
• GIC Housing Finance Limited	Results/Dividend
• Lakshmi Vilas Bank Limited	Results/Dividend
• KPIT Technologies Limited	Results/Dividend
• Foseco India Limited	Results
• KSB Pumps Limited	Results
• Sterlite Technologies Limited	Results/Dividend
• Supreme Petrochem Limited	Results/Dividend
• Tata Sponge Iron Limited	Results/Dividend

### CORPORATE ACTIONS AS ON 26/04/2017

• Sanofi BLS Int Services Ltd	Face Value Split From Rs 10/- Per Share To Re 1/- Per Share
• Orient Paper & Industries Ltd	Interim Dividend Re 0.50 Per Share

## Indian Markets

Indices	Close	Previous	Change (%)
NIFTY 50	9306.60	9217.95	0.96%
S&P BSE SENSEX	29943.24	29655.84	0.97%
NIFTY MID100 FREE	18062.20	17910.25	0.85%
NIFTY SML100 FREE	7489.95	7431.45	0.79%

## Exchange Turnover

Market	Current	Previous
NSE Cash	29310.01	25925.59
NSE F&O	599422.43	566012.09

## Previous FII Positions ( IN CRORE )

ACTIVITIES	Cash	F&O
NET BUY	-	2212.66
NET SELL	279.55	-

## Sectoral Indices

Indices	Close	Previous	Change (%)
BSE BANKEX	25003.33	24748.18	1.03%
BSE IT	9739.74	9721.26	0.19%
BSE CG	17872.85	17727.32	0.82%
BSE OIL & GAS	14565.28	14388.93	1.23%
BSE FMCG	9405.80	9251.56	1.67%
BSE AUTO	22435.44	22180.32	1.15%
BSE HC	15194.16	15095.26	0.66%
BSE POWER	2343.52	2332.02	0.49%
BSE METAL	11199.40	11131.97	0.61%

## Top Gainers

SCRIP NAME	Close	Previous	Change (%)
INFRATEL	375.25	358.25	4.75%
AXISBANK	516.40	498.65	3.56%
IOC	436.50	421.90	3.46%
BPCL	739.35	714.85	3.43%
M&M	1307.45	1264.60	3.39%

## Asia Pacific Markets

Indices	Close	Previous	Change (%)
Nikkei225	19079.33	18875.88	1.08%
HangSeng	24455.94	24139.48	1.31%
Straits Times	3163.93	3144.03	0.63%
Shanghai	3134.57	3129.53	0.16%
Kospi	2196.85	2173.74	1.06%
Jakarta	5680.80	5664.48	0.29%
Taiwan	9841.71	9717.95	1.27%
KLSE Composite	1765.80	1756.05	0.56%
All Ordinaries	5900.70	5885.60	0.26%

## Top Losers

SCRIP NAME	Close	Previous	Change (%)
TATAPOWER	85.20	86.00	-0.93%
CIPLA	552.95	557.05	-0.74%
AUROPHARMA	622.80	627.35	-0.73%
TCS	2311.50	2328.10	-0.71%
NTPC	165.45	166.55	-0.66%

## DISCLAIMER

This document has been prepared by Shriram Insight Share Brokers Ltd. and is meant for sole use by the recipient and not for circulation. This document is not to be reported or copied or made available to others. The information contained herein is from sources believed reliable. It should not be considered to be taken as an offer to sell or a solicitation to buy any security or as an official confirmation of any transaction. We do not represent that it is accurate or complete and it should not be relied upon as such. This document is prepared for assistance only and is not intended to be and must not alone be taken as the basis for an investment decision. The investments discussed or recommended in this report may not be suitable for all investors. Shriram Insight Share Brokers Ltd stock Recommendation Service is a general recommendation service and is not to be construed as an individual investor specific Portfolio Management and Advisory Service.

The user assumes the entire risk of any use made of this information. Each recipient of this document should arrive at an independent evaluation of an investment in the securities of companies referred to in this document and should consult its own advisors to determine the merits and risks of such an investment.

Shriram Insight Share Brokers Ltd shall not be responsible for any loss or liability incurred to the user as a consequence of his or any other person on his behalf taking any investment decisions based on the information, recommendations, research reports, analysis, quotes, etc. provided on the web site

Shriram Insight Share Brokers Ltd and its affiliated company (ies), their directors and employees may;

(a) from time to time, having a long or short position in, and buy or sell the securities of the company (ies) recommended.

(b) be engaged in any other transaction involving such securities and act as a market maker in the securities of the company (ies) or lender / borrower to such company (ies) or may have any other potential conflict of interests with respect to any recommendation and other related information and opinions.

Shriram Insight Share Brokers Ltd shall also not be liable for errors, omissions or typographical errors, disruption delay, interruption, failure, deletion or defect of/in the Service provided by it.

All Users of the Service in countries other than India understand that by using the Service, they may be violating the local laws in such countries. If the User chooses

EQUITIES DERIVATIVES COMMODITIES\* DP SERVICES MUTUAL FUNDS RESEARCH